

Atecpool AFN

Self-priming Centrifugal pump

Atecpool AFN



ENERGY EFFICIENCY IE3



2.900 R.P.M.

Atecpool AFN is a pool pump with excellent resistance due to quality and durable materials. Upon request it can be manufactured in bronze for use with sea or salt water.

Atecpool AFN Specifications

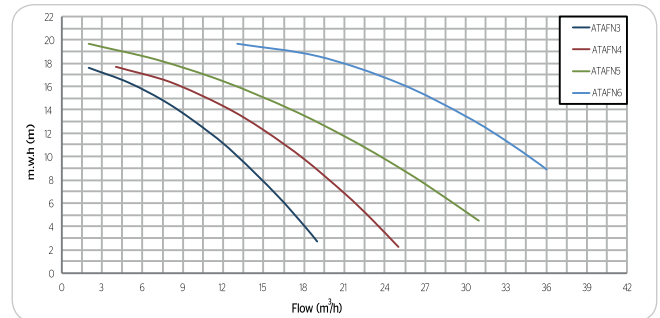
- Superior self-priming capacity up to 6 mwh
- Standard motor shaft which makes it compatible with any worldwide manufacturer's
- Open type impeller
- Available in cast iron or bronze
- High resistance to corrosion - all parts in contact with water are specially treated by long-term cataphoresis
- Highly durable materials
- Suitable for salt and sea water when in bronze version
- Thermal protection incorporated in single-phase version
- Protection: IP 55
- Motor: 50Hz / 2900 rpm
- Available at 60Hz upon request

Materials Cast Iron Version

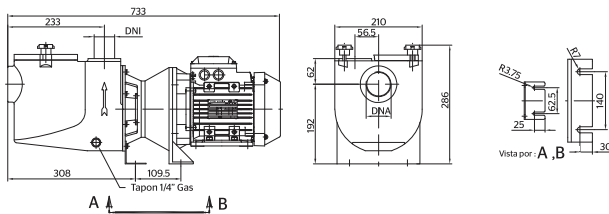
Pump housing and diffuser: cast iron
Pre-filter basket: polypropylene

Impeller: brass
Shaft: stainless steel AISI 316
Mechanical Seal: carbon + resin - ceramics

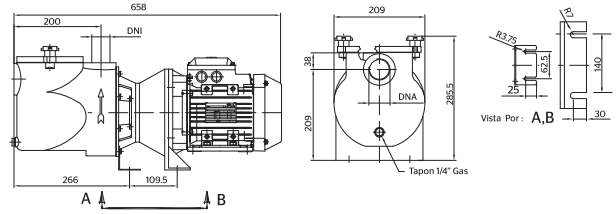
Performance graph



ATAN5 - 7



ATAN3 - 4



Code		Power		Capacity μF	II 230V		III 230/400V		Manometric height w.c.m								DN		Weight Kg								
		HP	KW		A	A	2	4	8	10	12	14	16	18	20	IN	OUT										
																	Flow m³/h										
ATAFN3	ATBR-3	1	0,75	100/25	4,9	2,9	1,6	19,0	17,5	15,5	13,1	10,7	8,0	5,0	1,8	-	1 1/2"	1 1/2"	26,5								
ATAFN4	ATBR-4	1,5	1,1	100/30	7,0	4,0	2,3	25,0	23,0	20,7	18,0	14,8	11,6	8,0	4,0	-	1 1/2"	1 1/2"	30,5								
ATAFN5	ATBR-5	2	1,5	200/40	9,4	5,3	3,1	-	30,5	26,5	24,0	20,5	16,5	12,0	7,0	1,5	2"	2"	35,8								
ATAFN6	ATBR-6	3	2,2	-	-	7,6	4,3	-	-	36,0	35,0	33,0	30,0	25,0	19,0	13,0	2" 1/2	2"	40,5								