

Ornamental Water Features

Adjustable Deck Jets

Adjustable Deck Jets

The deck fountain that can be adjusted at the nozzle while running. Simply set the water flow at the pump as per requirement and fine tune with the adjustable nozzle which is built into the deck fountain. Designed and engineered with perfection for easy installation and stress free use in residential and commercial pools. Multiple plumbing options for easier installation.

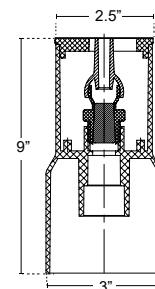
This water feature has an eyeball nozzle hidden from view by a decorative cap. 3-5 GPM creates a stream up to 10 feet high.



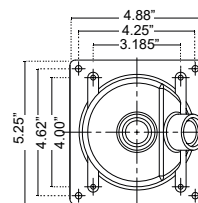
Specifications

- Includes body, movable adjustable & four decorative caps (white, black, gray, tan)
- Individually packaged
- 4" hole size
- Cap size is 2.5" diameter
- 3/4" Water line (adjustable)
- To regulate, first control the flow with a ball valve, then fine tune at the nozzle

	3 GPM	4 GPM	5 GPM
Head	3.9 ft.	7.9 ft.	11 ft.
Height	3 ft.	6.5 ft.	10 ft.



Deck Jet Dimensions



Wall Jet Bottom Dimensions

Code	Description	
7600-01	Adjustable Deck Jet Assembly with 4 Decorative Caps	-
7600-02	Adjustable Deck Jet Assembly with Brass Decorative Cover	-
7600-103	Round Deck Jet Cover	White
7600-104	Round Deck Jet Cover	Gray
7600-105	Round Deck Jet Cover	Black
7600-106	Round Deck Jet Cover	Tan
7600-107	Round Deck Jet Cover	Brass

* Deck Wrench Included with both above models.



Adjustable Brass Deck Jet

This Adjustable Brass Deck Jet projects a very elegant two-tier water effect. It has adjustable angle, adjustable flow & it is compatible with interchangeable nozzles.



Specifications

- Solid Brass Nozzle & Face
- Simple to Install & Operate
- Adjustable Direction & Flow
- Beautiful Fountain Effect

Code	Description
8600-01	Adjustable Brass Deck Jet Square Face with Flange
8600-02	Adjustable Brass Deck Jet Square Face Flangeless
8600-03	Adjustable Brass Deck Jet Round Face with Flange
8600-04	Adjustable Brass Deck Jet Round Face with Flangeless
8600-011	Interchangeable 5 Set Nozzles (Black Colour)