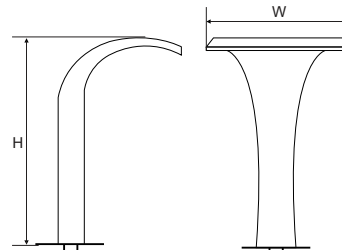
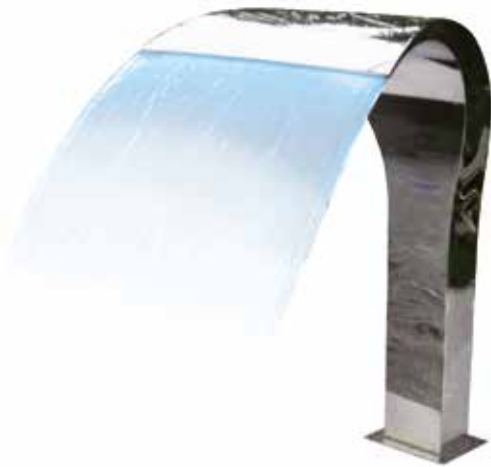


# Ornamental Water Features

## Water Curtains

### Water Curtain Eco

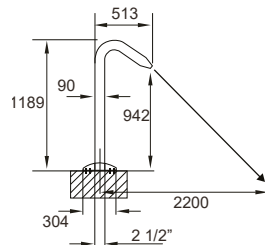
Made of AISI 316 stainless steel for massage and relaxation with the best aesthetic looks. Available in mat or mirror polished finish. Selection of pump based on the flow mentioned. Connection 2".



Code	Flow (m <sup>3</sup> )	Height H (mm)	Width W (mm)
0136080	21	800	600
0136090	21	900	600
01360100	21	1000	600
01360120	21	1200	600
01360140	21	1400	600

### Cannon Jet Capri

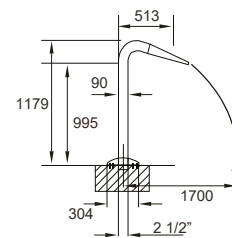
Made of AISI 316 stainless steel with circular nozzle-type mouth for maximum pressure, anchors required.



Code	Flow rate (m <sup>3</sup> /h)	Weight (kg)	Volume (m <sup>3</sup> )
AISI 316			
14200029	20	0.8	0.005

### Cannon Jet Capri Flat

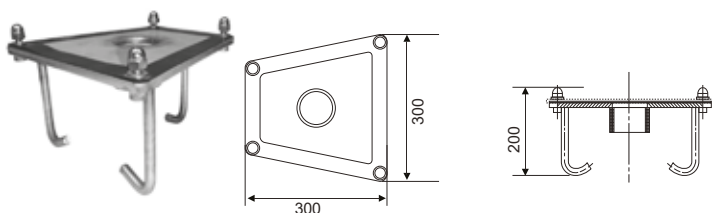
Made of AISI 316 stainless steel with flat mouth, anchors required.



Code	Flow rate (m <sup>3</sup> /h)	Weight (kg)	Volume (m <sup>3</sup> )
AISI 316			
14200030	22	0.8	0.005

### Anchor for Water Curtain

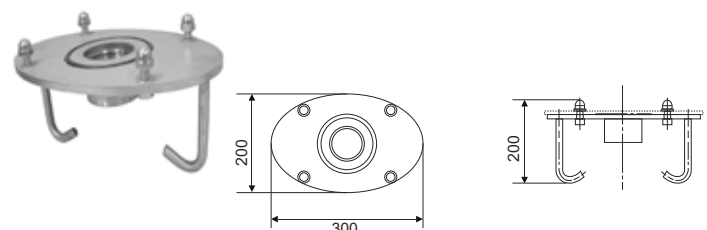
Made of AISI 316 stainless steel with two connections (1.5" and 2") to Water Curtains.



Code	Connection (inch)	Weight (kg)	Water Curtain Width (mm)
AISI 316			
1420020-1	1.5	4.25	400
1420020-2	2	4.75	500 / 600

### Anchor for Cannon Jet

Anchor in AISI 316 stainless steel. Female connection 2.5". Used with Cannon Jet Capri and Capri Flat.



Code	Connection (inch)	Weight (Kg)	Volume (m <sup>3</sup> )
AISI 316			
14200028	2.5	3.25	0.018