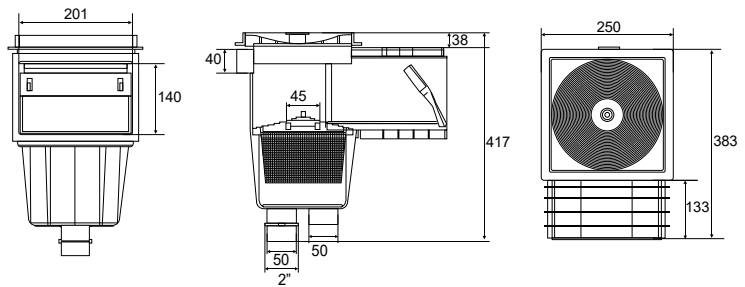


Pool Fittings

Skimmer AISI 316

Standard Skimmer with SS Face Plate for concrete

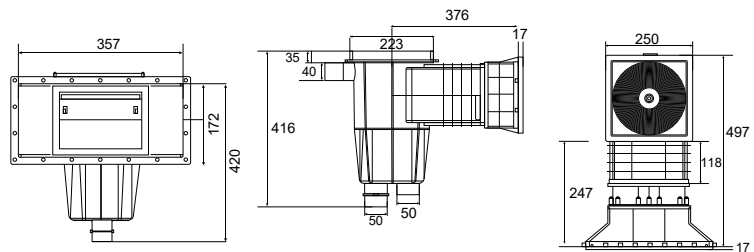
Manufactured in UV treated white ABS with SS face plate in AISI 316. Supplied with top square lid and frame. With flap and flow regulation plug. Supplied with extra strong plastic basket with handle. Skimmer has 3 optional connections for bottom suction. 1 1/2" internal thread, 2" outer thread and Ø50 mm inner wall for gluing. Recommended flow is 5m³/h. For optimum results it is recommended to use 1 skimmer per 25m² of pool surface area. The skimmer suction can also be used for vacuum cleaning the pool floor.



Code	Description	Weight (kg)	Volume (m ³)
015901010	Standard Skimmer ABS with SS Face plate concrete	3.75	0.062

Wide Mouth Skimmer with SS Face Plate for Concrete

Manufactured in UV treated white ABS with SS face plate in AISI 316. Supplied with top square lid and frame. Skimmer has 3 optional connections for bottom suction. 1 1/2" internal thread, 2" outer thread and Ø50mm inner wall for gluing. Recommended flow is 7.5m³/h.



Code	Description	Weight (kg)	Volume (m ³)
015901020	Wide Mouth Skimmer ABS with SS Face Plate Concrete	6.20	0.108

ABS Inlets



Return Inlet ABS Threaded

Made in white ABS with 2" outer connection thread and Ø50 mm inner wall for concrete pools. Installed with female threaded wall conduits. Maximum Flow: 7 m³/hr Recommended max. flow velocity 4m/s.

Code	Description	Std packing	Volume (m ³)
01592828-2	Return Inlet ABS threaded	24	0.020



Return Inlet ABS Slip Fit

Made in white ABS with Ø63 mm outer connection and Ø50 mm inner wall for concrete pools. Installed with internal glue type wall conduits. Maximum Flow: 7 m³/hr. Recommended maximum flow velocity 4 m/s.

Code	Description	Std packing	Volume (m ³)
01592828	Return Inlet ABS Slip Fit	24	0.020