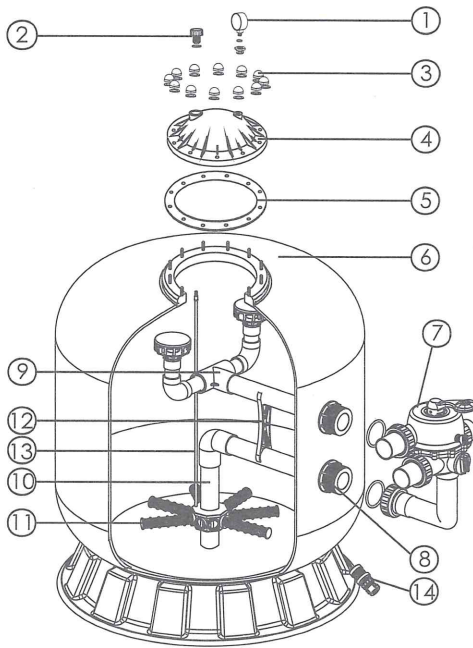
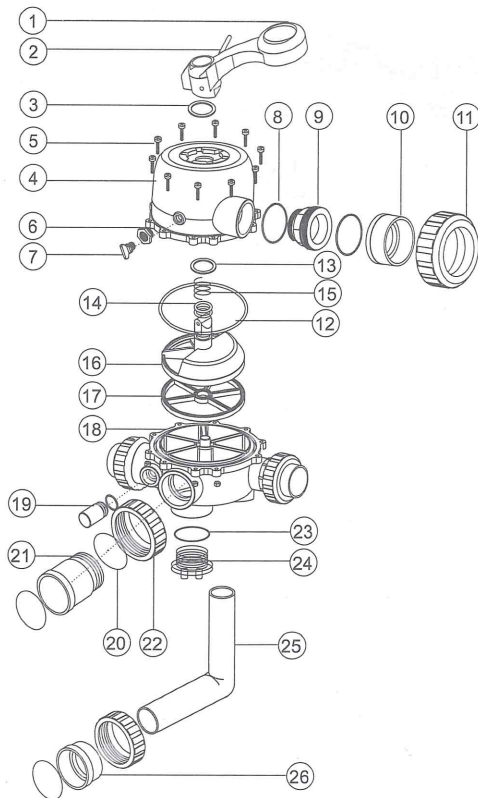


REPLACEMENT PARTS OF FILTER



Key No.	Part No.	Description	Qty
1	06011032	Oil Pressure Gauge With O-ring (40 psi)	1
	01111048	Connector for Pressure Gauge/Stopper	1
2	89010701	Air Release Valve	1
3	89010601	03013003 M8 Nut*12Pc; + 03012003 M8 Washer*12Pc;	1
4	01172005	Lid (Grey Colour)	1
5	02011126	Filter Neck Gasket	1
6	89011202	60702 Filter Tank With Base	1
	89011208	60800 Filter Tank With Base	1
	89011209	60900 Filter Tank With Base	1
7	88280813	2.0" Side Mount Valve	1
8	89011201	Connector Plate Side Mount	1
9	89011203	60702 Top part of the inner tank system	1
	89011210	60800 Top part of the inner tank system	1
	89011211	60900 Top part of the inner tank system	1
10	89011204	60702 Bottom part of the inner tank system	1
	89011212	60800 Bottom part of the inner tank system	1
	89011213	60900 Bottom part of the inner tank system	1
11	01172011	Laterals (233mm)	8
12	01111090	Tank System Support	1
13	89011205	60702 Air Vent Pipe	1
	89011206	60800 Air Vent Pipe	1
	89011207	60900 Air Vent Pipe	1
14	89010107	Water Drain Set	1

REPLACEMENT PARTS OF MULTIPOINT VALVE

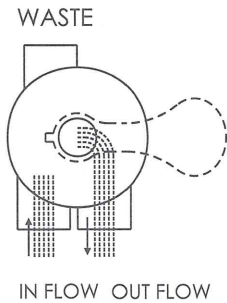


Key No.	Part No.	Description	Qty
1	01013003	Handle (Big)	1
2	03018008	Pin for Handle	1
3	01181001	Washer for Handle	1
4	01013021	2.0" Side Mount Valve Squareness Lid (Black)	1
5	89280107	M6*30 Screw with Nut	10
6	01111048	Connector for Pressure Gauge/Stopper	1
	02011139	O-Ring	1
7	89021303	Drain Plug with O'Ring	1
8	02020016	O-Ring for 2.0" Union	8
9	01013031	2.0" Connector (Black)	3
10	01171154	2.0" Union (A/E)	3
11	01013032	2.0" Union Nut (Black)	3
12	02011009	O-Ring for 2.0" Valve Lid	1
13	01181002	Washer for spring	1
14	02011022	O-Ring for 2.0" Valve Rotor	2
15	03014014	Spring	1
16	01021002	2.0" Valve Rotor	1
17	02311003	Spider Gasket	1
18	01013026	2.0" Side Mount Valve Bottom Body (Black)	1
19	89280104	Sight Glass With O-Ring	1
20	02020018	O-Ring for Union Tale	1
21	01013099	2.0" Union Tale (Black)	1
22	01013034	2.0" Union Nut (Black)	2
23	02020017	O-Ring for Plug	1
24	01013101	2.0" Side Mount Valve Plug (Black)	2
25	01013118	2.0" Elbow Tube (Black)	1
26	01171035	2.0" Union (Metric)	1

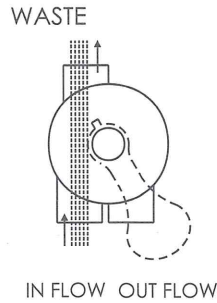
FUNCTIONS OF VALVE POSITIONS

Valve Position	Function
FILTER	Normal Filtration and Vacuuming
BACKWASH	Cleaning Filter by reversing the flow
RINSE	Used after backwash to flush dirt from valve
WASTE	By-passes filter, used for vacuuming to waste or lowering water level
RECIRCULATE	By-passes filter for circulating water to pool
CLOSED	Shuts off all flow to filter or pool

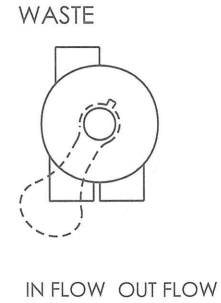
FILTER



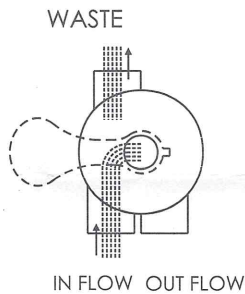
WASTE



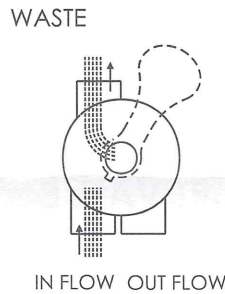
CLOSED



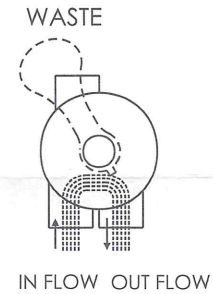
BACKWASH



RINSE



RECIRCULATE



GENERAL

- 1) Pipe tap boss provided for optional influent pressure gauge.
- 2) SERVICING VALVE(Stop pump,close gate valve in suction&discharge before proceeding):
 - a) Set handle in filter position. b) Remove cover screws. c) Lift cover and key assembly out.

TO ASSEMBLE:

- 1) Place valve key so that wedge opening is at TOP port (handle in Filter psn.). Flat edge of cover screw lug should align with flat edge of body screw lug.
- 2) Position cover O'Ring.
- 3) Secure assembly to body with cover screws. Tighten cover screws evenly and alternately. Do not over-tighten.

WARNING

- ⚠ THIS FILTER OPERATES UNDER HIGH PRESSURE. WHEN ANY PART OF THE CIRCULATING SYSTEM (e.g., CLAMP, PUMP, FILTER, VALVES, ETC.) IS SERVICED, AIR CAN ENTER THE SYSTEM AND BECOME PRESSURIZED. PRESSURIZED AIR CAN CAUSE THE LID OR VALVE TO BE BLOWN OFF WHICH CAN RESULT IN SEVERE INJURY, DEATH, OR PROPERTY DAMAGE.
- ⚠ TURN PUMP OFF BEFORE CHANGING VALVE POSITION.
- ⚠ TO PREVENT DAMAGE TO THE PUMP AND FOR PROPER OPERATION OF THE SYSTEM, CLEAN PUMP STRAINER AND SKIMMER BASKETS REGULARLY.
- ⚠ DO NOT UNSCREW SCREWS OF FLANGE CLAMP WHILE PUMP IS RUNNING.