

Atecpool Air Blowers

Single & Double Impeller



AIR BLOWER PUMP

INSTRUCTION MANUAL



Characteristics of the product:

- Large wind, low noise.
- Heater quick-dry function.
- Thermal protector TP16050.
- Fuse inside the motor.
- Insulation class F.
- Noise of the air blower pump with a nozzle as follows:

Model	ADOB400	ADOB700	ADOB900
Average noise in dB (A)	73	75	78

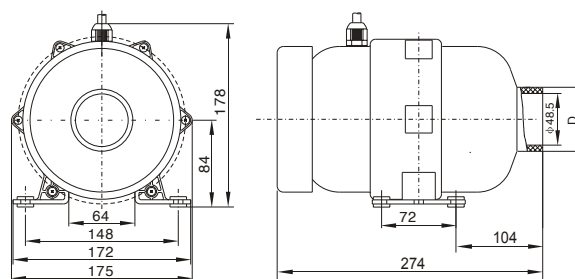
Technical parameter list

Model	Power (W)	Nozzles quantity
ADOB400	360~400	12~24
ADOB700	630~700	16~32
ADOB900	820~900	20~40

Parts and materials:

- Pump casing: high temperature resistant. Reinforced plastic.
- Air switch: 15 A, 250 V (optional).
- High quality carbon bush.

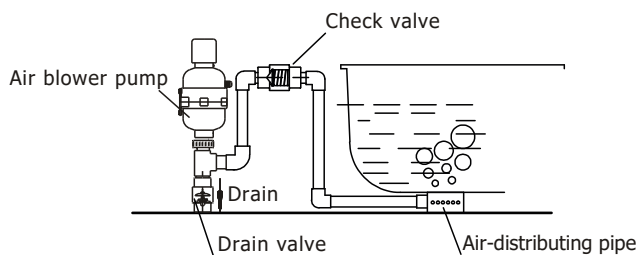
Dimensions



Provided with coupling sleeve Ø50 mm.

Use and installation:

- The number of nozzles installed must be higher than the minimum number indicated.
- The installation of the air distributor must be higher than the water-level in case that water can come into the air blower pump (Fig. 1).
- The connection pipe of the air blower pump must be temperature resistant.
- The air blower pump must be installed fixed, and the connection pipe must be fastened.



(Fig.1)

CAUTION



- The air blower pump must be grounded in order to prevent electrical shock or injury.
- The air distributor must be installed higher than the water-level of the tub, in order to prevent the water flow into the air blower.
- The outlet of the air blower pump mustn't be stuffed up when it's operating.
- If the outlet air flow is too small, the air temperature will increase. Pay attention to prevent scald.



In compliance with the Directive 2012/19/EU for waste electrical and electronic equipment (WEEE), the products marked with this symbol must be deposited at the local recycling center in each region for their selective collection, optimize the recycling of the components and materials and, reduce the impact on human health and the environment. The consumer should contact the local authority or the seller to inquire about the proper disposal of their appliance.

ES**DECLARACION “CE” DE CONFORMIDAD**

Según se describe en la documentación adjunta, certifica que es conforme a: Directiva de Máquinas **2006/42/CE**, Directiva de Baja Tensión **2014/35/UE**, Directiva de Compatibilidad Electromagnética **2014/30/UE**, Directiva de Sustancias Peligrosas (RoHS) **2011/65/UE** y Directiva RAEE **2012/19/UE**.
Bombes PSH Barcelona, SL está inscrito en el RII-AEE con número de inscripción registral 7225.

EN**EC CONFORMITY DECLARATION**

According to enclosed documentation, Atecpool International Espana declares that is compliant with: Machinery Directive **2006/42/EC**, Low Voltage Directive **2014/35/EU**, Electromagnetic Compatibility Directive **2014/30/EU**, Restriction of Hazardous substances (RoHS) **2011/65/UE** and WEEE Directive **2012/19/EU**.

FR**DECLARATION DE CONFORMITE “CE”**

Selon description adjoint, Atecpool International Espana c'est conforme a la Directive de Machine **2006/42/CE**, Directive bas tension **2014/35/CE**, Directive de compatibilité électromagnétique **2014/30/CE**, Directive Substances Dangereux (RoHs) **2011/65/CE** and RAEE Directive **2012/19/EU**.