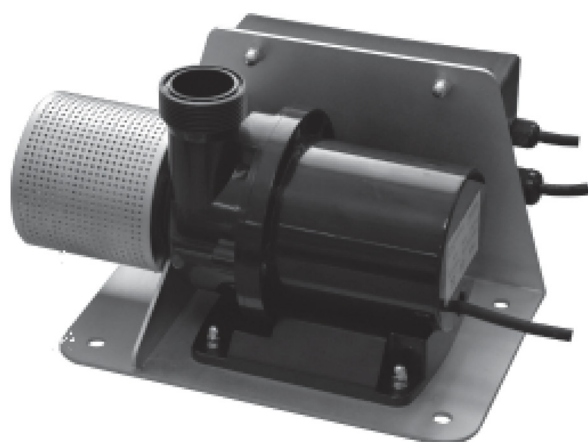


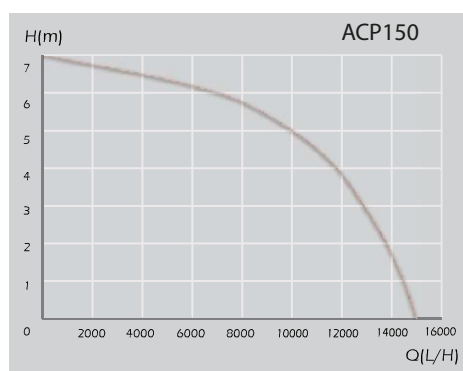
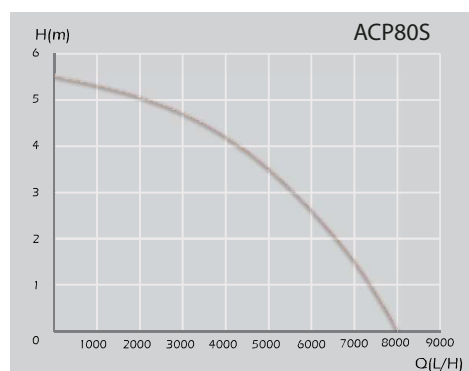
Rainbow Fountain Controllable Submersible Pump



Atecpool Controllable Submersible Pump Specifications

- **Quiet and high efficient:** Brushless DC motor driven water pump, high efficient design of volute and impeller.
- **Dry running protection:** If pump is running without water, it will stop automatically to prevent failure from wear.
- **Over heat protection:** Pump will stop running if the motor temperature is high.
- **Over current protection:** To prevent motor failure from shorten.
- **DMX signal:** to control pump speed. Input DMX signal to control pump stop or start and adjust speed.
- **Stand-by model:** of lowest speed. Pump is run at lowest speed.
- **IP68 , submersible.** Install submersed.
- **FOC driver precisely:** , provides stable speed control
- **0.6 second speed ramp from stand-by mole to max speed:** Fastest speed reaction to ensure better fountain sense.

Performance curves



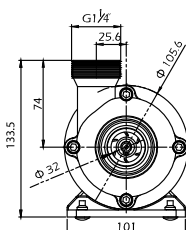
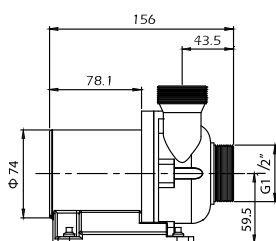
Example of application



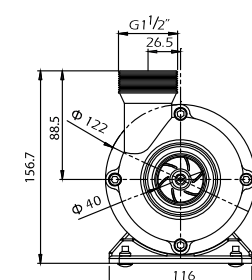
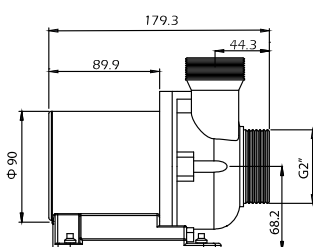
Code	Voltage	Power	Max Speed	Controlled by
ACP80S	24VDC	80W	3000rpm	DMX
ACP150	24VDC	150W	3000rpm	DMX

Pumps ACP80S and ACP150 work with 1" comet nozzle.

Pumps Dimensions ACP80S



ACP150



Controllable Submersible Pump

Characteristics	ACP80S	ACP150
Motor type	BLDC	BLDC
Control Signal	DMX	DMX
Q max	7000 l/h	13000 l/h
H max	5m	7m
Speed from 0% ~ 100%	0.6s	0.6s
Working Voltage	DC24V	DC24V
Max Immersion depth	1m	1m
Protection class	IP68	IP68
Max Power Input	80W	150W
Suction side connection	G1 1/2"	G2"
Outlet connection	G1 1/4"	G1 1/2"
Pump housing	Plastic	Plastic
Ambient temperature	less than 50°C	less than 50°C
Cable for DMX input	1.5m RVV 3x0.5	1.5m RVV 3x0.5
Cable for DMX output	1.5m RVV 3x0.5	1.5m RVV 3x0.5
Cable for pump	3m H05RN-F 3x0.5	3m H05RN-F 3x0.5
Cable for power input	1.5m H05RN-F 2x0.75	1.5m H05RN-F 2x0.75